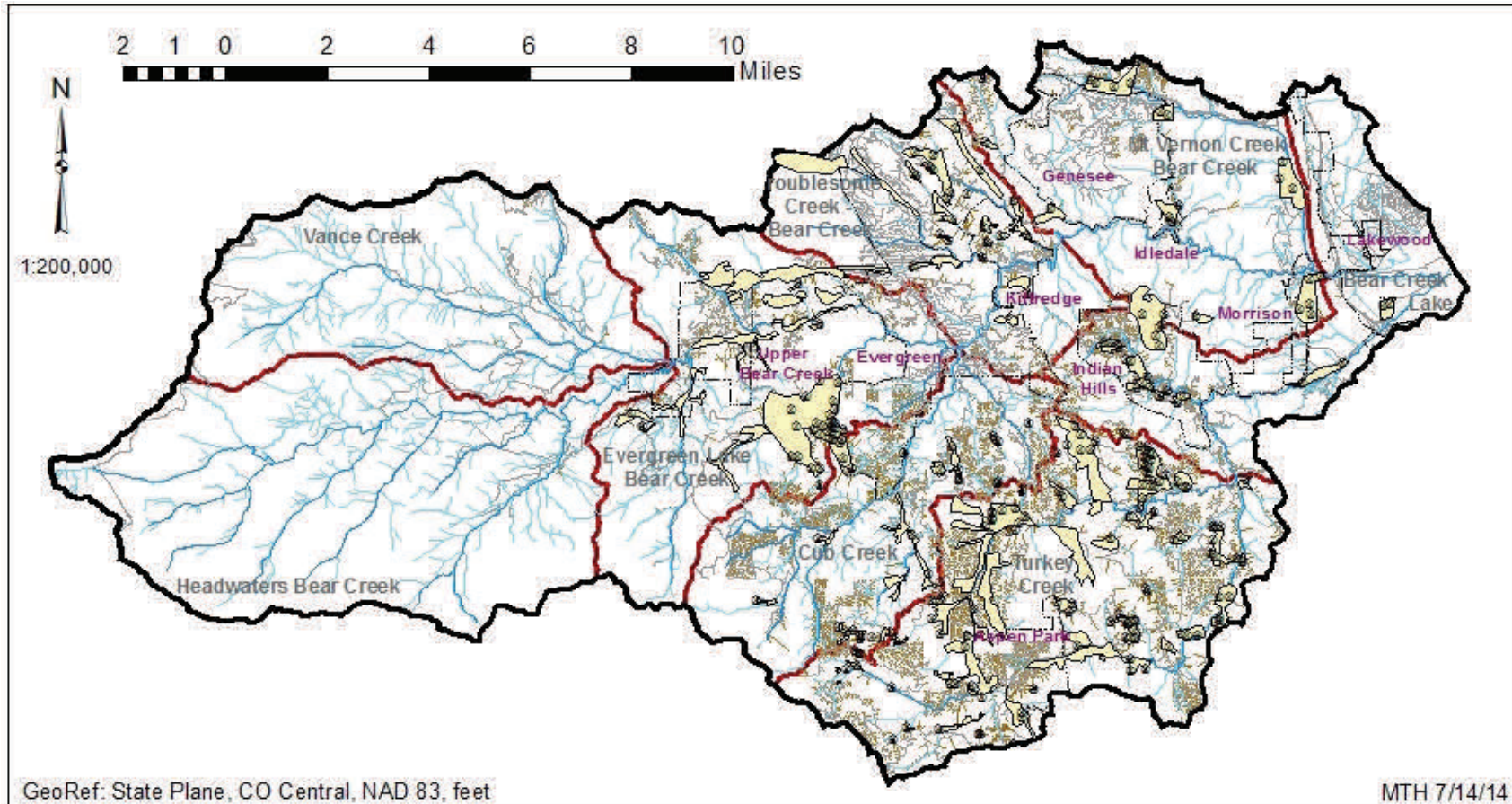


# Bear Creek Watershed Association Map Series - 30: Unpaved Roads Pastures Horses



Updated July 31, 2014



GeoRef: State Plane, CO Central, NAD 83, feet

MTH 7/14/14

## Bear Creek Watershed: Rough delineation of unpaved roads, pastures, and horse properties

### Legend

- Horse Property
- Major Streams
- ▭ Meadow or Pasture
- Main Roads
- ▭ Subbasins
- Unpaved Roads

### Notes

A partial delineation of horse properties, meadows and unpaved roads / private drives throughout the Bear Creek Watershed were approximately located using Jeffco 2012 aerial photos.